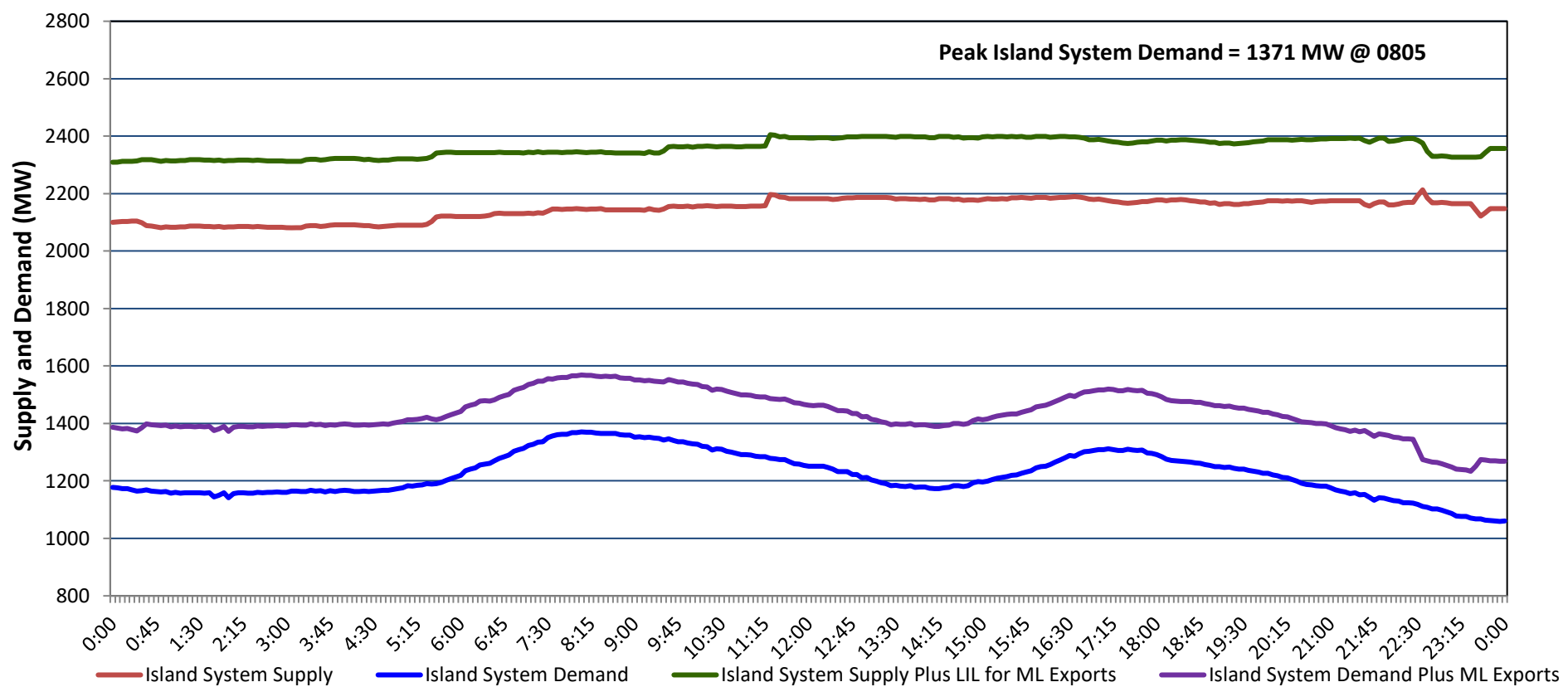


# Newfoundland Labrador Hydro (NLH) Supply and Demand Status Report Filed Wednesday, January 29, 2025

## Section 1 Island Interconnected System - Supply, Demand & Exports Actual 24 Hour System Performance For Tuesday, January 28, 2025



### Island Supply Notes For January 28, 2025

- A** As of 0000 hours, October 20, 2024, Holyrood Unit 1 unavailable due to forced extension to planned outage (170 MW).  
**B** At 1120 hours, January 28, 2025, Granite Canal Unit available (40 MW).

## Section 2 Island Interconnected System - Supply, Demand & Outlook

Wed, Jan 29, 2025	Island System Outlook <sup>2</sup>	Seven-Day Forecast	Island System Daily Peak Demand (MW)	
			Forecast <sup>8</sup>	Adjusted <sup>6</sup>
Island System Supply: <sup>4</sup>	2,230 MW	Wednesday, January 29, 2025	1,475	1,378
NLH Island Generation: <sup>3,7</sup>	1,525 MW	Thursday, January 30, 2025	1,415	1,319
NLH Island Power Purchases: <sup>5</sup>	145 MW	Friday, January 31, 2025	1,655	1,556
NP and CBPP Owned Generation:	210 MW	Saturday, February 1, 2025	1,435	1,338
LIL/ML Net Imports to Island: <sup>9</sup>	350 MW	Sunday, February 2, 2025	1,605	1,506
		Monday, February 3, 2025	1,560	1,462
7-Day Island Peak Demand Forecast:	1,655 MW	Tuesday, February 4, 2025	1,385	1,289

### Island Supply Notes For January 29, 2025

- Notes:**
1. Generation outages for running and corrective maintenance are included. These are not unusual for power system operations. They generally do not impact customer supply. Hydro schedules outages to system equipment whenever possible to coincide with periods when customer demands are low and sufficient supply reserves are available. However, from time to time equipment outages are necessary and reserves may be impacted.
  2. As of 0800 Hours.
  3. Gross continuous unit output.
  4. Gross output from all Island sources (including Note 3).
  5. NLH Island Power Purchases include: ML Imports, Exploits Generation, Rattle Brook, Star Lake, Wind Generation and capacity assistance (when applicable).
  6. Adjusted for interruptible load and the impact of voltage reduction when applicable.
  7. Due to limitations inherent in the design of combustion turbines, the output of combustion turbines may be reduced in the event that ambient temperatures exceed the threshold required for full rated output. This threshold is dependent on the design of each turbine.
  8. Does not include ML Exports.
  9. LIL Import sunk in the Island System. Actual LIL flows will be restricted by various system conditions including, but not limited to, Island Load, ML Exports and Avalon Unit status.

## Section 3 Island Peak Demand and Exports Information Previous Day Actual Peak and Current Day Forecast Peak

Tue, Jan 28, 2025	Island Peak Demand <sup>10</sup>	8:05	1,371 MW
	Exports at Peak		198 MW
	LIL Net Imports to Island		7,494 MWh
Wed, Jan 29, 2025	Forecast Island Peak Demand		1,475 MW

- Notes:** 10. Island Demand is supplied by NLH generation and purchases, LIL Imports plus generation owned and operated by Newfoundland Power and Corner Brook Pulp & Paper (Deer Lake Power, DLP).